

## IES Report

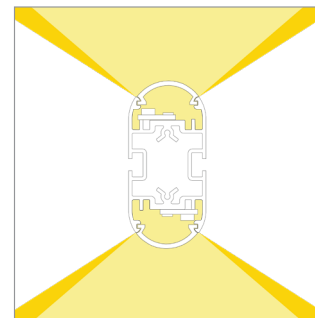
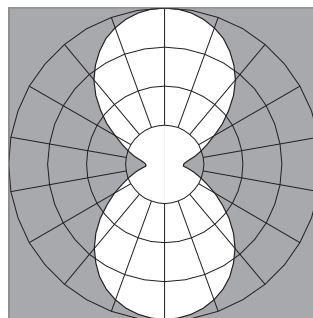
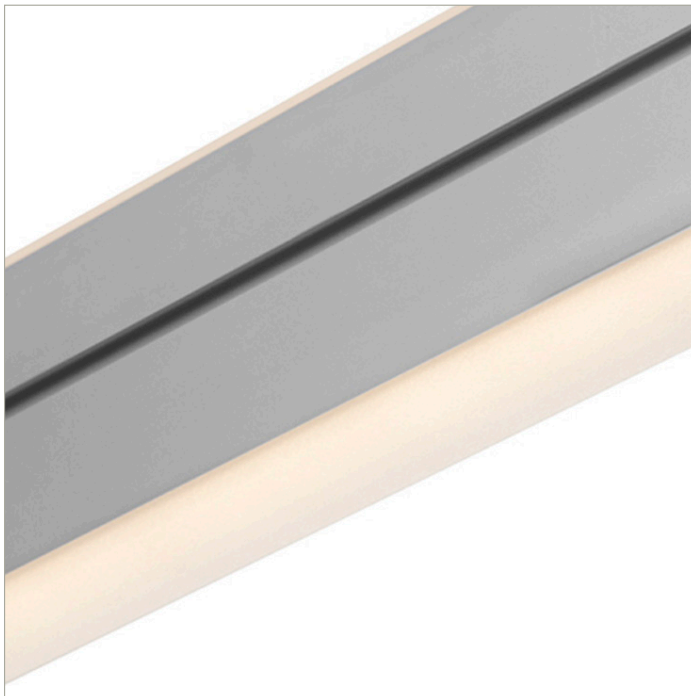
DoubleRace™ | 107 | Diffuse, Round, up | Diffuse, Round, down | 80 CRI | LO

107-DR-XX-4-48-XX-XX-XX-XX-X-X-Z-LO-35-22-X-XX-X

	2700K	3000K	3500K	4000K
Efficacy - Lumens per Watt	95	98	100	102
Total Lumens, 4' rail length (1219mm)	2831	2920	2980	3040
Lumens per foot (305mm)	708	730	745	760
Lumens per foot UP (305mm)	355	366	374	381
Lumens per foot DOWN (305mm)	353	364	371	379
Input Power (W), 4' rail length (1219mm)	29.9	29.9	29.9	29.9
Watts per foot (305mm)	7.5	7.5	7.5	7.5
CRI	85	85	85	85

Due to the large number of options in Vode's product offering, most Vode IES reports are factored reports prepared from source reports. Source reports are the IES test reports prepared for Vode by an NVLAP accredited photometric test laboratory. Factored reports are based on data from the Vode source reports.

If the data above is in black, it is directly from a Vode source report. If it is in grey, it is factored from Vode source reports. Reference details on Vode source reports can be found on the [IES File Finder](#) page on [vode.com](#).



## IES Report

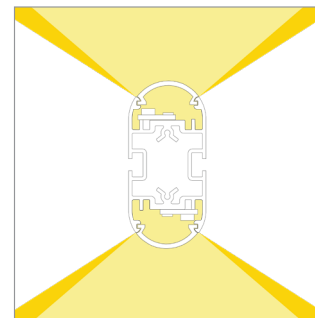
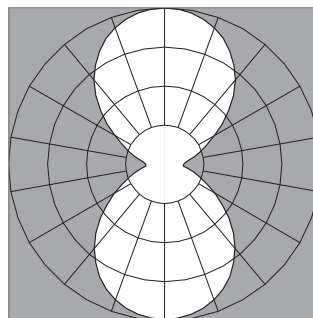
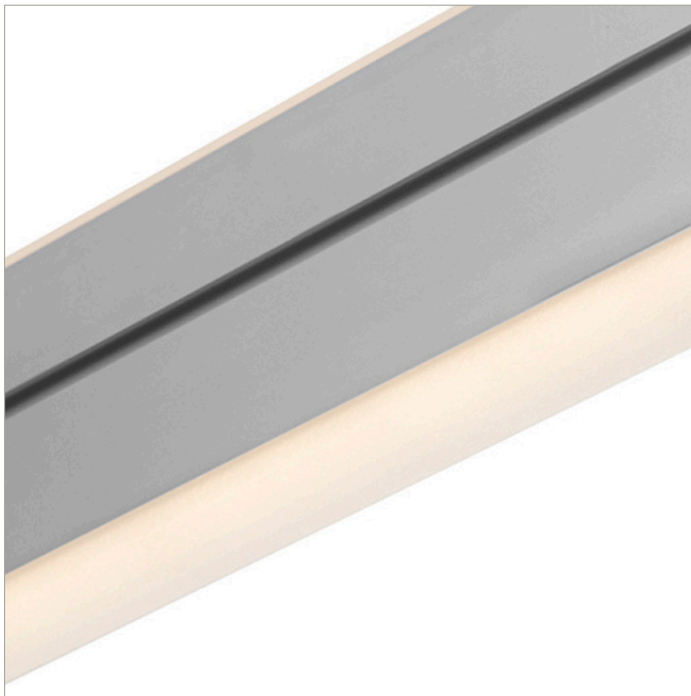
DoubleRace™ | 107 | Diffuse, Round, up | Diffuse, Round, down | 80 CRI | SO

107-DR-XX-4-48-XX-XX-XX-XX-X-X-Z-SO-35-22-X-XX-X

	2700K	3000K	3500K	4000K
Efficacy - Lumens per Watt	118	122	124	126
Total Lumens, 4' rail length (1219mm)	5662	5841	5960	6079
Lumens per foot (305mm)	1416	1460	1490	1520
Lumens per foot UP (305mm)	710	733	748	763
Lumens per foot DOWN (305mm)	705	727	742	757
Input Power (W), 4' rail length (1219mm)	48.3	48.3	48.3	48.3
Watts per foot (305mm)	12.1	12.1	12.1	12.1
CRI	85	85	85	85

Due to the large number of options in Vode's product offering, most Vode IES reports are factored reports prepared from source reports. Source reports are the IES test reports prepared for Vode by an NVLAP accredited photometric test laboratory. Factored reports are based on data from the Vode source reports.

If the data above is in black, it is directly from a Vode source report. If it is in grey, it is factored from Vode source reports. Reference details on Vode source reports can be found on the [IES File Finder](#) page on [vode.com](#).



## IES Report

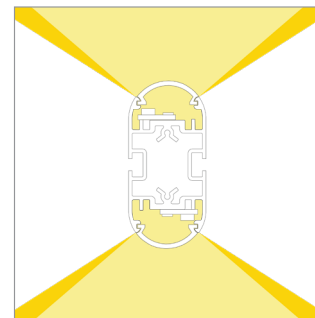
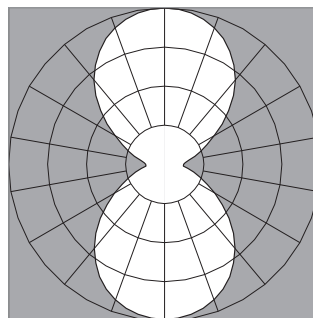
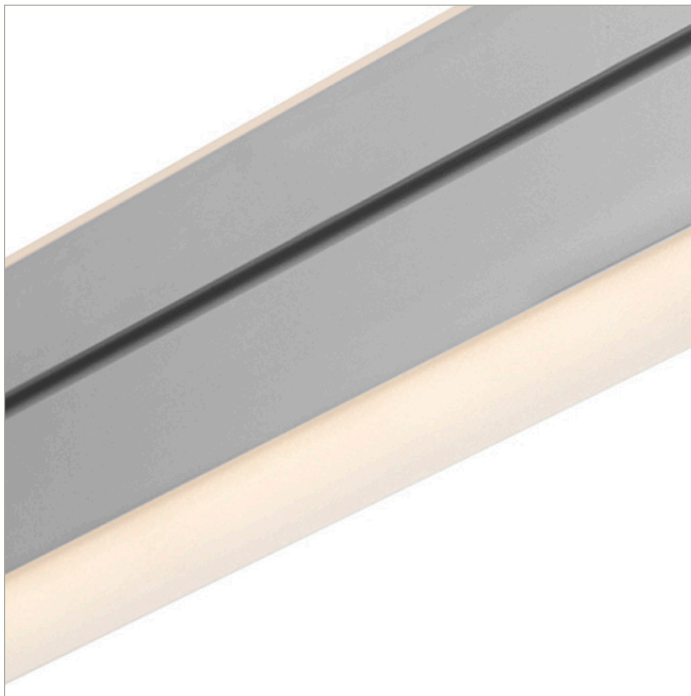
DoubleRace™ | 107 | Diffuse, Round, up | Diffuse, Round, down | 80 CRI | HO

107-DR-XX-4-48-XX-XX-XX-XX-X-X-Z-HO-35-22-X-XX-X

	2700K	3000K	3500K	4000K
Efficacy - Lumens per Watt	110	113	116	118
Total Lumens, 4' rail length (1219mm)	10758	11098	11324	11551
Lumens per foot (305mm)	2690	2774	2831	2888
Lumens per foot UP (305mm)	1350	1392	1421	1449
Lumens per foot DOWN (305mm)	1340	1382	1410	1438
Input Power (W), 4' rail length (1219mm)	98.4	98.4	98.4	98.4
Watts per foot (305mm)	24.7	24.7	24.7	24.7
CRI	85	85	85	85

Due to the large number of options in Vode's product offering, most Vode IES reports are factored reports prepared from source reports. Source reports are the IES test reports prepared for Vode by an NVLAP accredited photometric test laboratory. Factored reports are based on data from the Vode source reports.

If the data above is in black, it is directly from a Vode source report. If it is in grey, it is factored from Vode source reports. Reference details on Vode source reports can be found on the [IES File Finder](#) page on [vode.com](#).



## IES Report

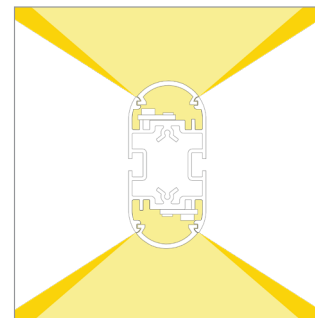
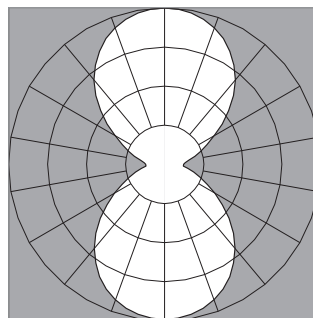
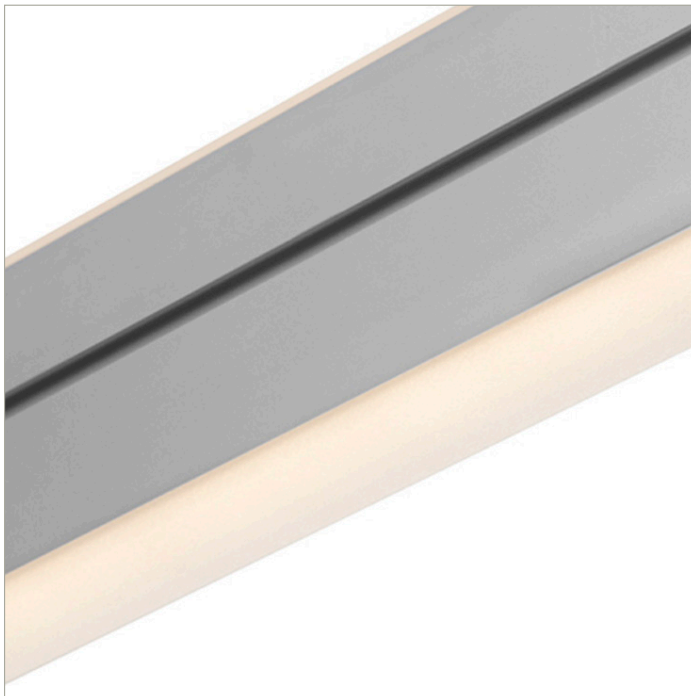
DoubleRace™ | 107 | Diffuse, Round, up | Diffuse, Round, down | 90 CRI | LO

107-DR-XX-4-48-XX-XX-XX-XX-X-X-Z-LO-359-22-X-XX-X

	2700K	3000K	3500K	4000K
Efficacy - Lumens per Watt	82	85	86	88
Total Lumens, 4' rail length (1219mm)	2441	2518	2569	2620
Lumens per foot (305mm)	610	629	642	655
Lumens per foot UP (305mm)	306	316	322	329
Lumens per foot DOWN (305mm)	304	314	320	326
Input Power (W), 4' rail length (1219mm)	29.9	29.9	29.9	29.9
Watts per foot (305mm)	7.5	7.5	7.5	7.5
CRI	96	96	96	96

Due to the large number of options in Vode's product offering, most Vode IES reports are factored reports prepared from source reports. Source reports are the IES test reports prepared for Vode by an NVLAP accredited photometric test laboratory. Factored reports are based on data from the Vode source reports.

If the data above is in black, it is directly from a Vode source report. If it is in grey, it is factored from Vode source reports. Reference details on Vode source reports can be found on the [IES File Finder](#) page on [vode.com](#).



## IES Report

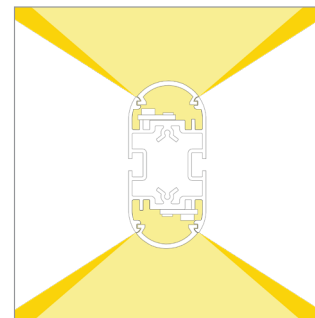
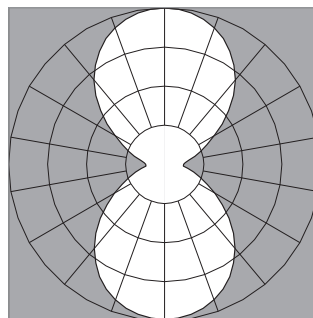
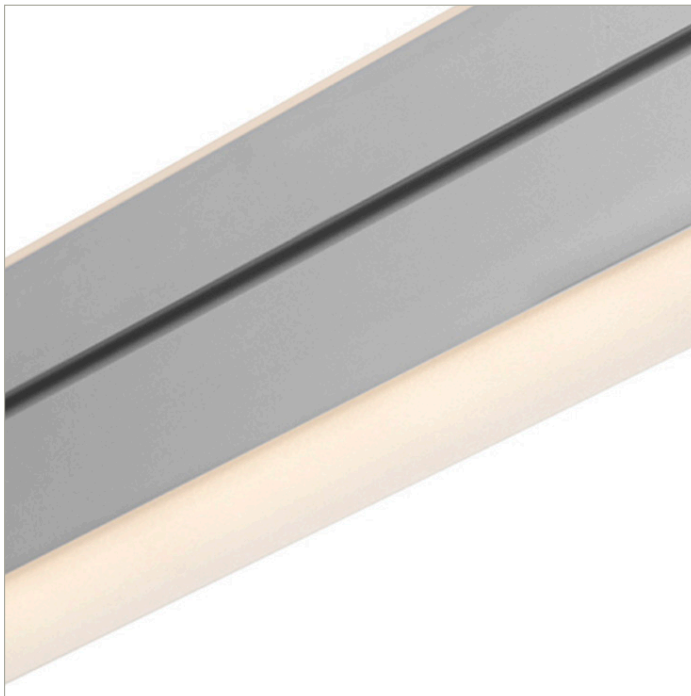
DoubleRace™ | 107 | Diffuse, Round, up | Diffuse, Round, down | 90 CRI | SO

107-DR-XX-4-48-XX-XX-XX-XX-X-X-Z-SO-359-22-X-XX-X

	2700K	3000K	3500K	4000K
Efficacy - Lumens per Watt	102	105	107	109
Total Lumens, 4' rail length (1219mm)	4881	5035	5138	5241
Lumens per foot (305mm)	1220	1259	1285	1310
Lumens per foot UP (305mm)	612	632	645	658
Lumens per foot DOWN (305mm)	608	627	640	653
Input Power (W), 4' rail length (1219mm)	48.3	48.3	48.3	48.3
Watts per foot (305mm)	12.1	12.1	12.1	12.1
CRI	96	96	96	96

Due to the large number of options in Vode's product offering, most Vode IES reports are factored reports prepared from source reports. Source reports are the IES test reports prepared for Vode by an NVLAP accredited photometric test laboratory. Factored reports are based on data from the Vode source reports.

If the data above is in black, it is directly from a Vode source report. If it is in grey, it is factored from Vode source reports. Reference details on Vode source reports can be found on the [IES File Finder](#) page on [vode.com](#).



## IES Report

DoubleRace™ | 107 | Diffuse, Round, up | Diffuse, Round, down | 90 CRI | HO

107-DR-XX-4-48-XX-XX-XX-XX-X-X-Z-HO-359-22-X-XX-X

	2700K	3000K	3500K	4000K
Efficacy - Lumens per Watt	95	98	100	102
Total Lumens, 4' rail length (1219mm)	9274	9567	9762	9958
Lumens per foot (305mm)	2319	2392	2441	2489
Lumens per foot UP (305mm)	1164	1200	1225	1249
Lumens per foot DOWN (305mm)	1155	1191	1216	1240
Input Power (W), 4' rail length (1219mm)	98.4	98.4	98.4	98.4
Watts per foot (305mm)	24.7	24.7	24.7	24.7
CRI	96	96	96	96

Due to the large number of options in Vode's product offering, most Vode IES reports are factored reports prepared from source reports. Source reports are the IES test reports prepared for Vode by an NVLAP accredited photometric test laboratory. Factored reports are based on data from the Vode source reports.

If the data above is in black, it is directly from a Vode source report. If it is in grey, it is factored from Vode source reports. Reference details on Vode source reports can be found on the [IES File Finder](#) page on [vode.com](#).